

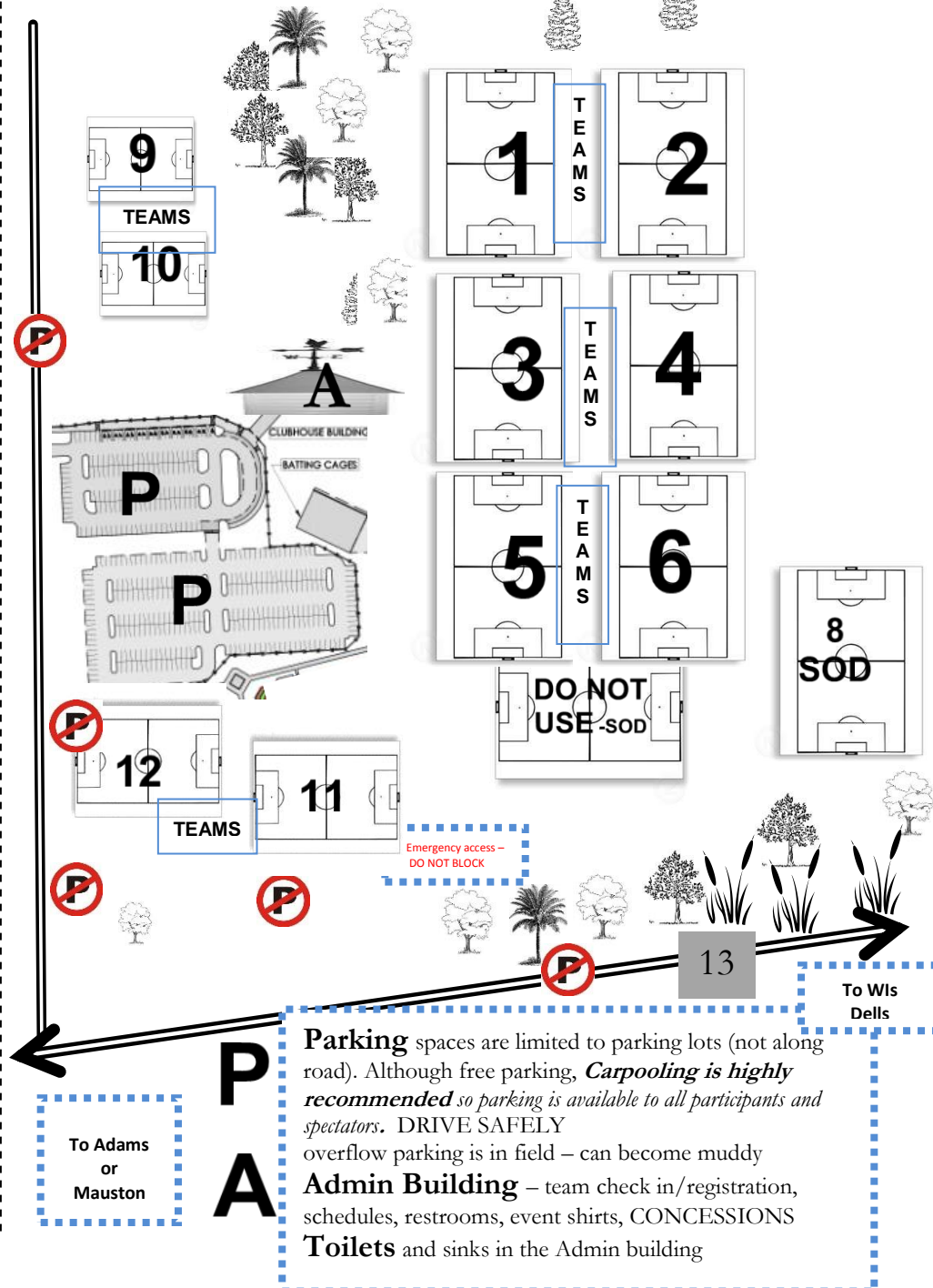
# Welcome to RUSH OCTOBERFEST and the WOODSIDE SPORT Facility – WIS DELLS

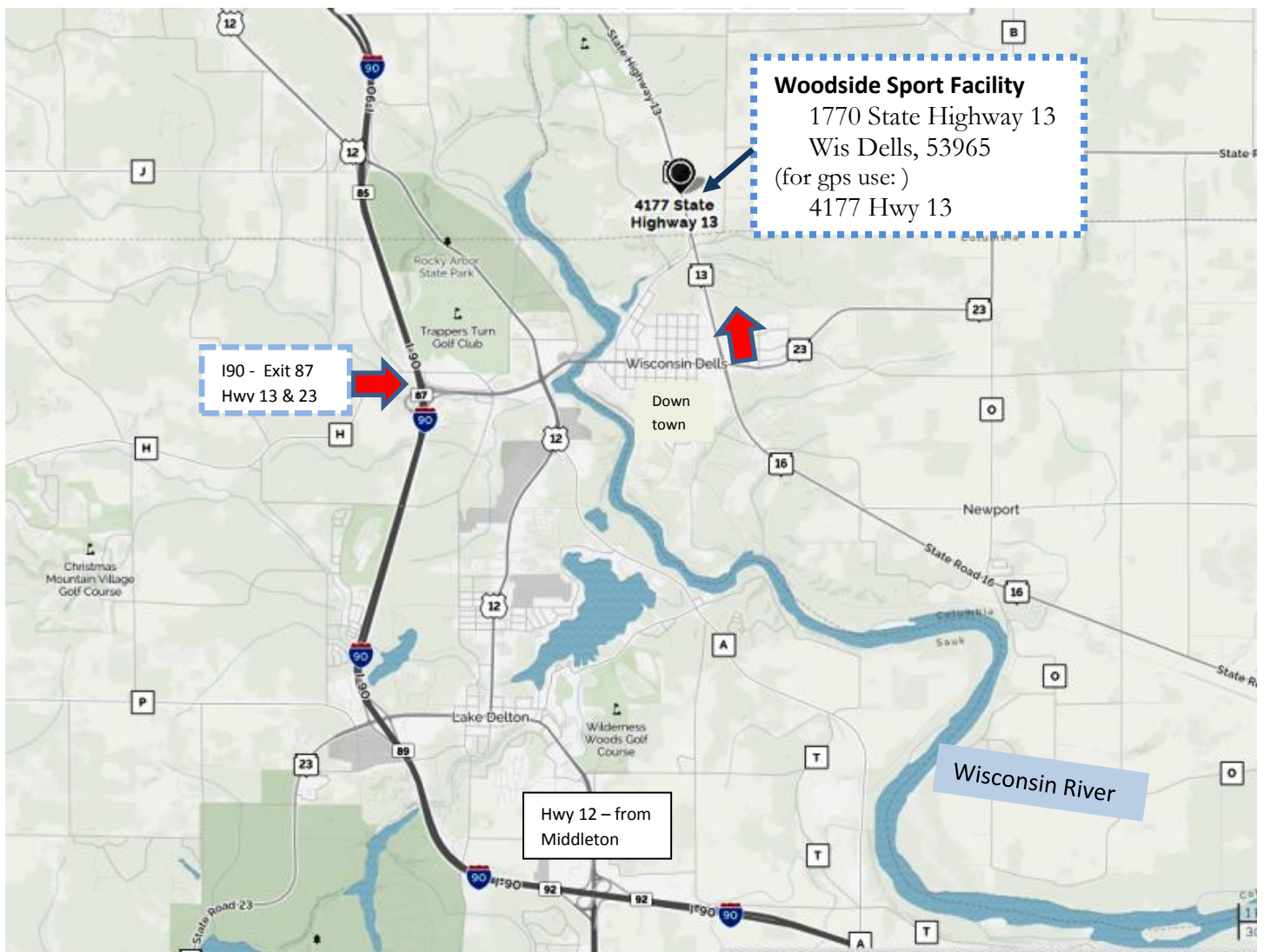
## FACILITY POLICIES

- Players may bring in their own water/sports drink, spectators may bring in coffee only. No other carry-ins beyond the entrance gate.
- No animals inside the facility. (Service animals only are permitted)
- Use of tobacco products, metal spikes, glass bottles, GUM, sunflower seeds, metal chairs (Card table like legs) are NOT allowed in the facility.
- We have zero tolerance for any physical or verbal confrontations by players, coaches, fans or anyone else. You will be asked to leave the premises. Proper language is expected out of parents, coaches, players, and referees.
- Only coaches, players, referees, and authorized personnel are allowed on the playing fields.
- Dispose of all trash and recycling in appropriate receptacles.
- If there is any presence of lightning or thunder detected, players & spectators must vacate the field area and seek safe shelter.
- Concessions – restaurant quality and large selection available at end of building. Including breakfast!
- Athletic trainers will be on hand at the Tournament for injury assessment and minor injury care. If taping need, bring own tape. Located at administration building or seek out field marshal with radio on field for urgent needs.
- Entrance fee charge of \$6/day for anyone ages 6 and up (Coaches (on the tournament Gotsoccer listing) and Players are free)
- All visitors are expected to cooperate with park & event staff.
- Spectators must be on opposite sides of the fields from **Team Areas (TEAMS)** during matches. Field Marshals will enforce this policy.
- **CARPOOL – although parking is free it is VERY limited**

### Hosted BY:

Rush WI  
1770 State Highway 13  
Wis Dells, 53965  
(for gps use: )  
4177 Hwy 13





Hwy 12 through Lake Delton and Wisconsin Dells can be very busy at times. There are 4 Wisconsin Dells exits off of I90. Exit 87 is the quickest. Take hwy 13/23 over the dam bridge and through Downtown Wisconsin Dells – drive safe as there can be a lot of foot traffic in that location. Watch for Hwy 13 sign that will have you taking a sharp left turn (Amber’s Inn, All Star Value Inn, Woodside Dells are hotels on that corner), go toward Chula Vista / Adams, Woodside will be on right side. Look for turf soccer and baseball fields and Rush Wisconsin signs.

Park in parking slots, there will be some parking attendants helping out. **CAR POOL** please as space is limited!!  
 Overflow parking uses a GRASS field – will be muddy/bumpy.

**Wisconsin  
 Dells**  
 Where Nature & Fun Collide!™